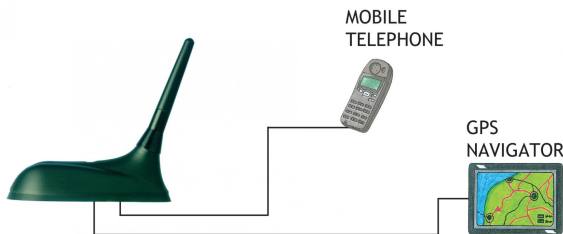


# GPS-C 900/1800/UMTS

GPS Antenna with a  $\frac{1}{4} \lambda$  Mobile Antenna for the 900 MHz, 1800 MHz and UMTS Bands

## DESCRIPTION

- External antenna whip mounted on the GPS-Combi mount.
  - Triple-frequency antenna covering EGSM-900, DCS-1800 and UMTS.
  - Easily removable whip for car wash.
- GPS-antenna for fixed installations.
  - Full hemispherical coverage.
  - Built-in high-gain, low-noise amplifier.
  - Right-Hand Circular Polarization (RHCP).
  - 5 V supply voltage (3 V respectively 12 V available on request).
  - DC supply via RF-connector.



## ORDERING DESIGNATIONS

TYPE	PRODUCT NO.
GPS-C 900/1800/UMTS	132000046

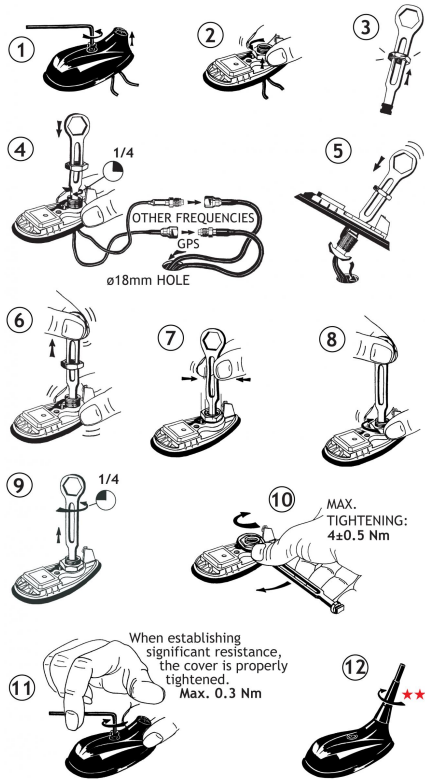
## SPECIFICATIONS FOR WHIP

ELECTRICAL	
MODEL	GPS-C 900/1800/UMTS
ANTENNA TYPE	Triple-frequency antenna
FREQUENCY	880–960 MHz (EGSM) 1710–1880 MHz (DCS) 1900–2200 MHz (UMTS)
IMPEDANCE	Nom. 50 $\Omega$
POLARIZATION	Vertical
GAIN	Approx. 0 dB (acc. to EIA RS-329-1) on all bands
BANDWIDTH	900 MHz: $\geq 80$ MHz @ SWR $\leq 1.6$ 1800 MHz: $\geq 170$ MHz @ SWR $\leq 2.25$
SWR	$\leq 1.5$ @ f. res.
MAX. POWER	25 W
MECHANICAL	
MATERIALS	Black-chromed brass Black POM
COLOUR	Black
HEIGHT	Approx. 67 mm
WEIGHT	Approx. 16 g
MOUNTING	On the GPS-Combi mount

## SPECIFICATIONS FOR GPS-COMBI MOUNT

ELECTRICAL GENERAL SPECIFICATIONS	
MODEL	GPS-COMBI MOUNT
ANTENNA TYPE	Active patch antenna
FREQUENCY	1575 MHz (DCS)
IMPEDANCE	Nom. 50 $\Omega$
POLARIZATION	Circular right-hand
COVERAGE	Hemispherical
GAIN	28 dBic in axial direction (typ.)
CROSS-POLARISATION ATT.	$> 10$ dB (typ.)
SELECTIVITY	$> 45$ dB down at $\pm 45$ MHz
BUILT-IN AMPLIFIER	
GAIN	$> 30$ dB (typ.)
NOISE FIGURE	$< 1$ dB (typ.)
P 1dB	Approx. +7 dBm
SWR (output)	$\leq 2.0$
SUPPLY VOLTAGE	$5 \pm 0.5$ VDC (3 V resp. 12 V on request)
CURRENT CONSUMPTION	Approx. 25 mA
MECHANICAL (ONLY FOR THE GPS-PART)	
MATERIALS	Cu-nite brass Stainless steel Reinforced thermoplastic
ANTENNA COLOUR	Black
TEMP. RANGE	$-35^{\circ}$ C $\rightarrow$ $+75^{\circ}$ C
CONNECTOR	FME (male for GPS) + FME (female for mobile antenna)
RECOMMENDED INSTALL. TORQUE	$4 \pm 0.5$ Nm
DIMENSIONS (H x L)	Approx. 30 x 89 mm
ROOF THICKNESS	Max. 2.5 mm
WEIGHT	Approx. 114 g
MOUNTING	$\varnothing 18.0$ mm dia. hole for roof thickness up to 2.0 mm $\varnothing 18.5$ mm dia hole for roof thickness 2.0 - 2.5 mm Tools for mounting included

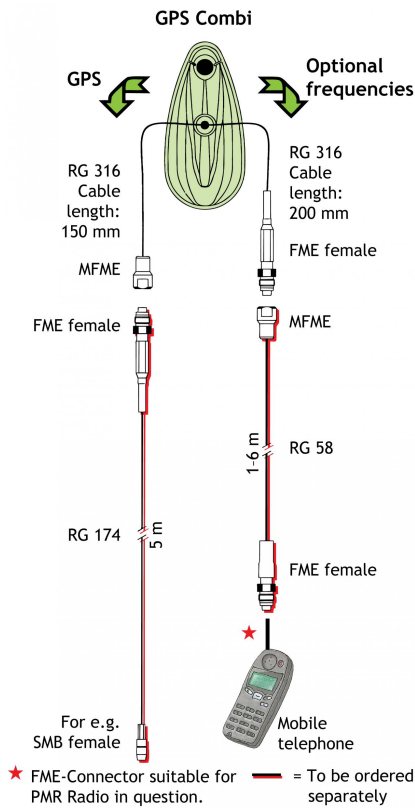
## MOUNTING INSTRUCTIONS



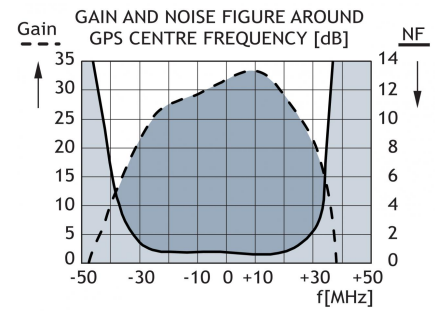
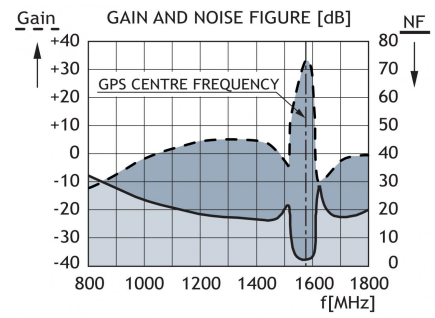
★★ The whip should always be dismantled during car wash.

Do not use sealer on rubbergasket or other places.

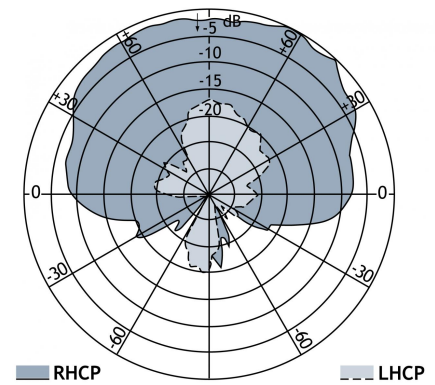
## CABLE MOUNTING



## TYPICAL RESPONSE CURVES



## VERTICAL RADIATION PATTERN



PROCOM A/S reserve the right to amend specifications without prior notice.

23/08/13